



## Baby Cowichan Sweater

Sizes: 0-3 mths, 6-12 mths,  
18-24 mths, **3T**



This sweater is worked on US8 circular or straight needles in a worsted weight yarn that is soft, durable and machine washable. The size variations are color coded throughout the pattern. You can easily customize the length of the sleeves and body as they are worked from the top down.

The cowichan pattern is worked in duplicate stitch over the finished body in black yarn and each size chart is included. When starting the charts, start with the front right A chart, then the back panel B chart and end with the front left C chart to ensure the pattern is evenly positioned.

### Begin Sweater (Yoke)

Co 28, 34, 40, **52** sts

Row 1: sl1, k2, 3, 4, 6, pm, k5, 6, 7, 9, pm, k12, 14, 16, 20, pm, k5, 6, 7, 9, pm, k3, 4, 5, 7

Row 2 (and all WS rows): sl1, p remaining sts

Row 3: sl1, inc 1, \*k to 1 st before marker, inc 1, k1, slip m, k1, inc 1\* repeat from \* to last stitch, inc1, k1 [38, 44, 50, 62 sts]

Row 4 (and all WS rows): sl1, p remaining sts

Row 5: sl1, \*k to 1 st before marker, inc 1, k1, slip m, k1, inc 1\* repeat from \* knit to end

Row 6 (and all WS rows): sl1, p remaining sts

Row 7: sl1, inc 1, \*k to 1 st before marker, inc 1, k1, slip m, k1, inc 1\*  
repeat from \* to last stitch, inc1, k1 [56,62, 68, 80 sts]

Row 8 (and all WS rows): sl1, p remaining sts

Row 9: sl1, \*k to 1 st before marker, inc 1, k1, slip m, k1, inc 1\*  
repeat from \* knit to end

Row 10 (and all WS rows): sl1, p remaining sts

Row 11: sl1, inc 1, \*k to 1 st before marker, inc 1, k1, slip m, k1, inc 1\*  
repeat from \* to last stitch, inc1, k1 [74,80,86, 98 sts]

Row 12 (and all WS rows): sl1, p remaining sts

Row 13: sl1, \*k to 1 st before marker, inc 1, k1, slip m, k1, inc 1\*  
rep. from \* knit to end

Row 14 (and all WS rows): sl1, p remaining sts

Row 15: sl1, \*k to 1 st before marker, inc 1, k1, slip m, k1, inc 1\*  
rep. from \* knit to end

Row 16 (and all WS rows): sl1, p remaining sts

Row 17: sl1, \*k to 1 st before marker, inc 1, k1, slip m, k1, inc 1\*  
rep. from \* knit to end

Row 18 (and all WS rows): sl1, p remaining sts

Row 19: sl1, \*k to 1 st before marker, inc 1, k1, slip m, k1, inc 1\*  
rep. from \* knit to end

**END ON ROW 20 FOR 0-3months [106 sts]**

Row 20 (and all WS rows): sl1, p remaining sts

Row 21: sl1, \*k to 1 st before marker, inc 1, k1, slip m, k1, inc 1\*  
rep. from \* knit to end

**END ON ROW 22 FOR 6-12months [120 sts]**

Row 22 (and all WS rows): sl1, p remaining sts

Row 23: sl1, \*k to 1 st before marker, inc 1, k1, slip m, k1, inc 1\*

rep. from \* knit to end

**END ON ROW 24 FOR 18-24mo [134 sts]**

Row 24 (and all WS rows): sl1, p remaining sts

Row 25: sl1, \*k to 1 st before marker, inc 1, k1, slip m, k1, inc 1\*  
rep. from \* knit to end

Row 26 (and all WS rows): sl1, p remaining sts

Row 27: sl1, \*k to 1 st before marker, inc 1, k1, slip m, k1, inc 1\*  
rep. from \* knit to end

**END ON ROW 28 FOR 3T [162 sts]**

Row 28 (and all WS rows): sl1, p remaining sts

**Split for body:**

K to first M, remove m, place next **25, 26, 31, 35** sts on holder, join yarn to back, k to next m, remove m, place next **25, 26, 31, 35** sts on holder, k to end [**56, 68, 80, 92** ]  
Purl one row & skip to size specific instruction;

**0-3mo:** Row 1-2 work in St stitch, slipping the first st of each row ending on a WS (purl) row.  
Change to white yarn and continue St stitch, slipping the first St of each row for 22 rows.  
Change to grey yarn and continue St stitch, slipping the first St of each row for 2 rows.

**6-12mo:** Row 1-4 work in St stitch, slipping the first st of each row ending on a WS (purl) row.  
Change to white yarn and continue St stitch, slipping the first St of each row for 22 rows.  
Change to grey yarn and continue St stitch, slipping the first St of each row for 4 rows.

**18-24mo:** Row 1-4 work in St stitch, slipping the first st of each row ending on a WS (purl) row.  
Change to white yarn and continue St stitch, slipping the first St of each row for 24 rows.  
Change to grey yarn and continue St stitch, slipping the first St of each row for 4 rows.

**3T:** Row 1-8 work in St Stitch, slipping the first st of each row ending on a WS (purl) row.  
Change to white yarn and continue St Stitch, slipping the first St of each row for 24 rows.  
Change to grey yarn and continue St Stitch, slipping the first St of each row for 4 rows.

Body length from underarm SHOULD BE APPROX **6, 7, 8, 10"**  
Work 7 rows in k1tbl, p1, continuing to slip first st of every row  
BO all sts LOOSELY in pattern & DO NOT CUT YARN!

**Make collar:**

Starting at front right edge, PU & KNIT 1 st for every slipped sts along sides and every cast on st around neck of cardigan

**0-3mo & 6-12mo:** Row 1-4: knit all (garter stitch)

Row 5: k to 18, 22, 26, 34 sts from end, w&t  
Row 6: k to 18, 22, 26, 34 sts from end, w&t  
Row 7: k to 2 sts from wrapped st, w&t

18-24mo & 3T: Row 1-6: knit all (garter stitch)  
Row 7: k to 18, 22, 26, 34 sts from end, w&t  
Row 8: k to 18, 22, 26, 34 sts from end, w&t  
Row 9: k to 2 sts from wrapped st, w&t

Repeat last row - 5 times more (you should have wrapped and turned 4 times on each side)

Next row: K to the last 17, 21, 25, 33 sts, picking up and knitting the wraps as you go, k2tog, YO, \*k2, 3, 4, 6, k2tog, YO, repeat to last 3, 4, 5, 7 sts, k3, 4, 5, 7

0-3mo & 6-12mo: Work 2 rows in garter stitch (picking up & knitting the wraps on first row)  
Next row: PU & Knit previous two rows edge sts, BO Three sts and continue to knit all collar sts, PU & Knit collar edge sts, BO three sts. BO all collar stitches in k1,p1 rib pattern loosely!

18-24mo & 3T: Work 3 rows in garter stitch (picking up & knitting the wraps on first row)  
Next row: PU & Knit previous two rows edge sts, BO Three sts and continue to knit all collar sts, PU & Knit collar edge sts, BO three sts. BO all collar stitches in k1,p1 rib pattern loosely!

#### Sleeves:

Place 25, 26, 31, 35 sts from holder onto dpns  
K all sts (st sts) for 5, 6, 7, 9”

*\*for sizes 0-3 months, 18-24mo, and 3T* - dec 1 sts by k2tog into the first stitch, p1. Continue with ribbing below for sleeve cuffs.

#### Sleeve Cuffs:

Row 1 - 7: k1tbl, p1 (in the round)  
BO all sts in rib pattern loosely  
Repeat for other sleeve

Weave in all ends (you will also have a hole at the underarm that needs to be sewn)  
Sew on buttons \*ensure buttons fit through button holes

Begin Charts in Duplicate Stitch starting with chart A, followed by Chart B and ending with Chart C to ensure pattern is even across panels.

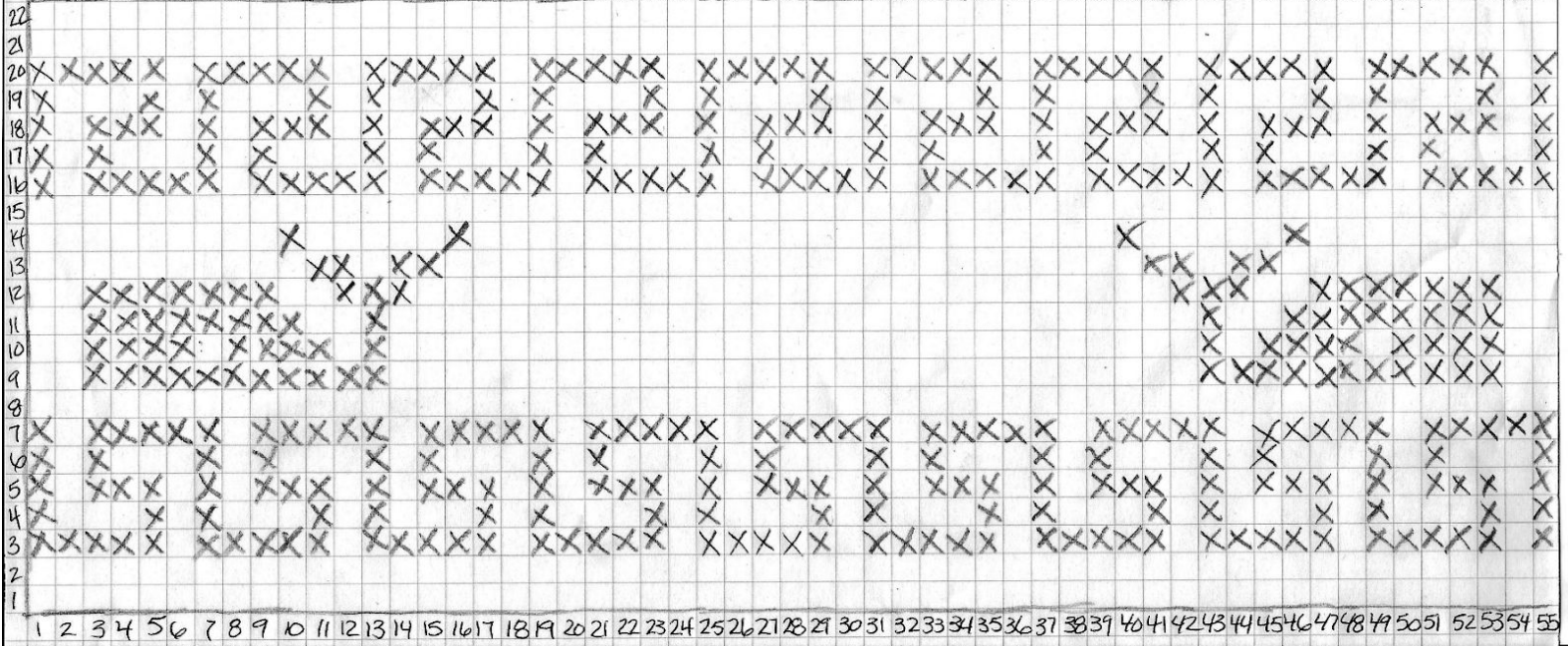
# WHALE CHART.

SIZE 0-3mo

FRONT LEFT

BACK

FRONT RIGHT

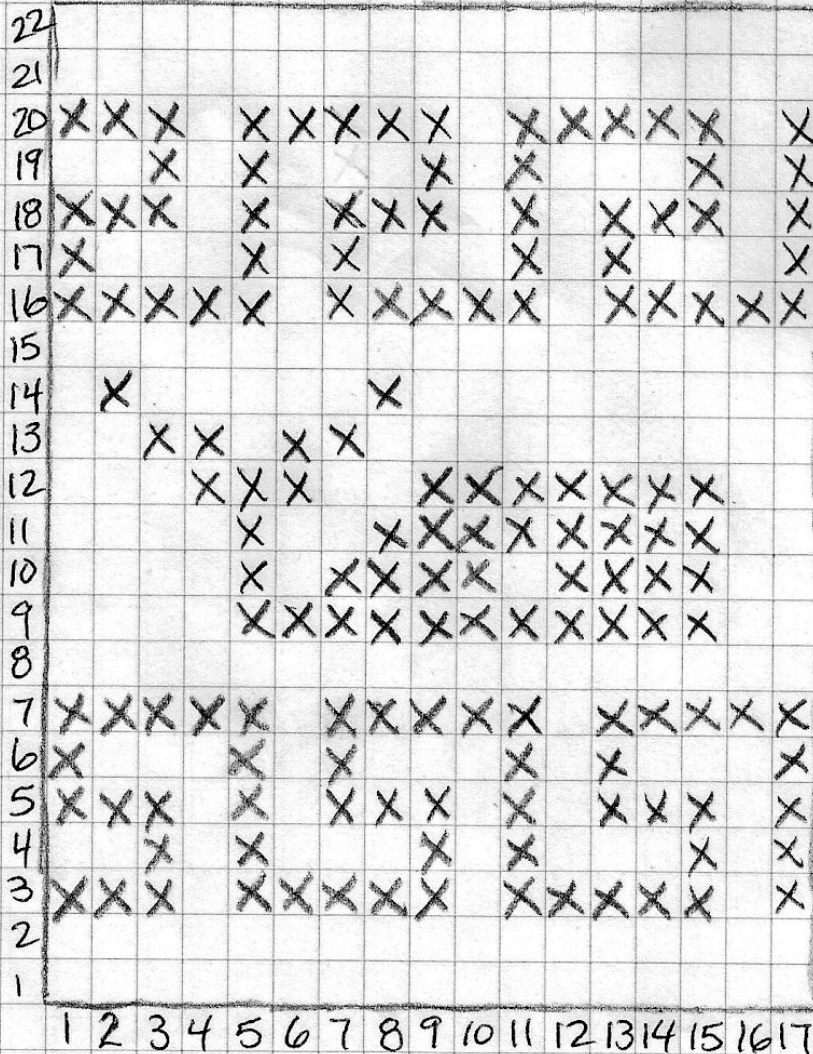


# WHALE CHART.

## FRONT RIGHT.

### SIZE 6-12 MO

# A



















# WHALE CHART.

BACK.

SIZE 3T

B

